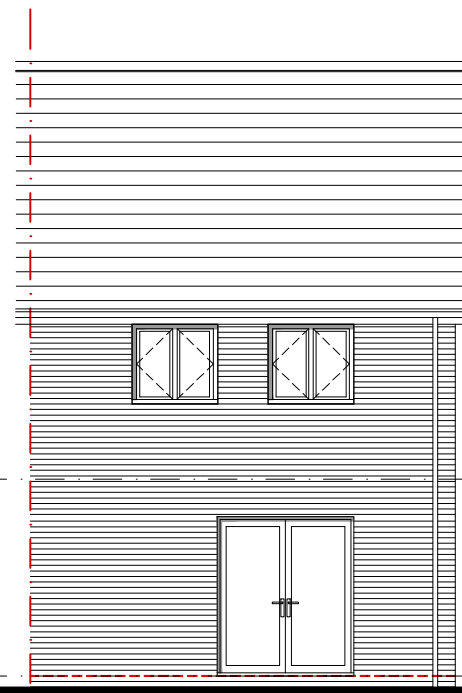
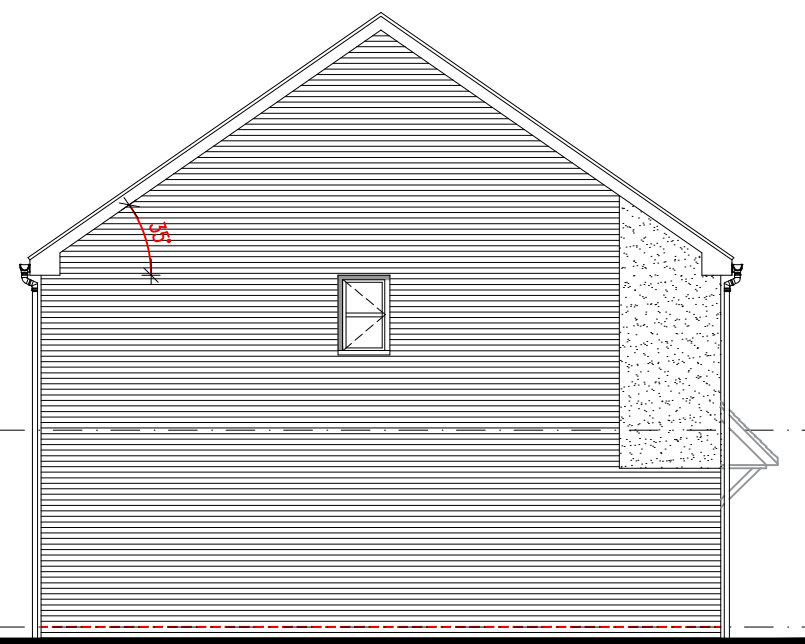




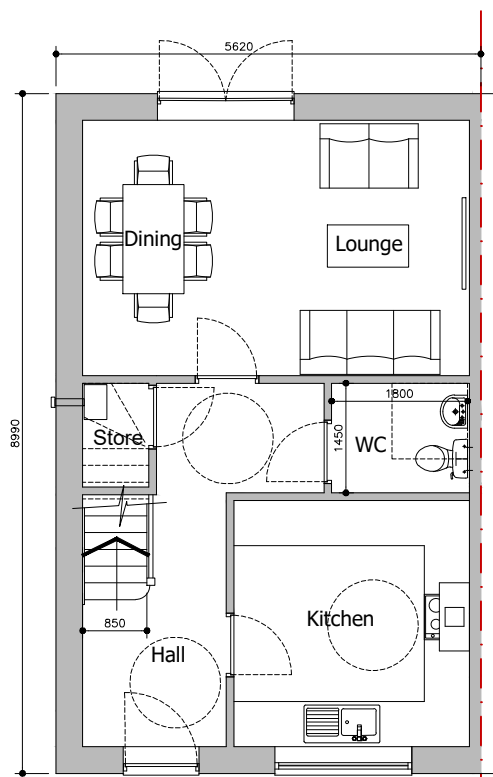
Front Elevation
Rendered Variation



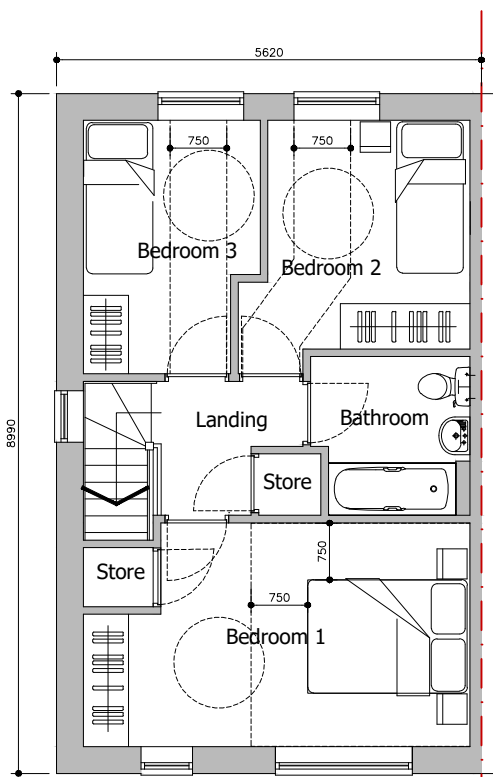
Rear Elevation



Side Elevation



Ground Floor Plan



First Floor Plan

HOUSETYPE DETAILS
 Ground Floor 41.7sqm
 First Floor 41.7sqm
Total 83.4sqm (898sqft)

M4(2) compliant unit
90% of NDSS = 76m2

| REV: | DATE: | DESCRIPTION: | BY: |
|------|------------|----------------------------|-----|
| A | 26.11.2024 | Amended in line with M4(2) | CC |
| - | 12.02.2024 | FIRST ISSUE | OKB |

PROJECT:

Highall Developments,
Halebank Road, Widnes

Type B

DRAWING TITLE:

3 Bed End Mews (Render)

| SCALE: | SIZE: |
|-----------|-------|
| 1:100 | A3 |
| PLAN REF: | REV |
| B-3BEM-R | A |