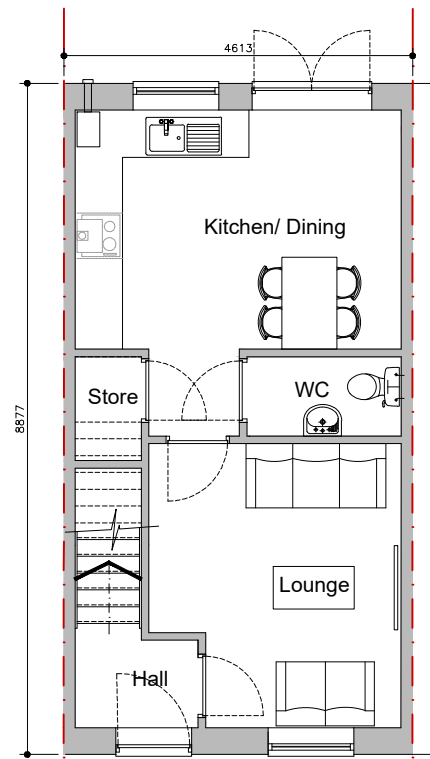


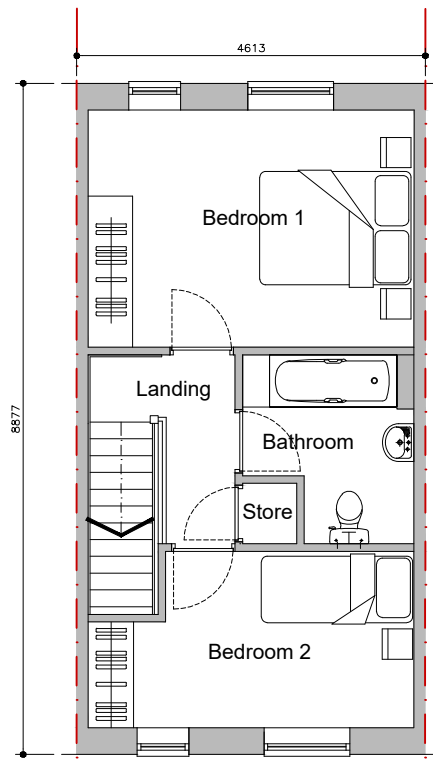


Front Elevation

Rear Elevation



Ground Floor Plan



First Floor Plan

HOUSETYPE DETAILS

Ground Floor 34.6sqm
 First Floor 34.6sqm
Total 69.2sqm (745sqft)

90% of NDSS = 63m2

REV:	DATE:	DESCRIPTION:	BY:
A	26.11.2024	Footprint enlarged	CC
-	12.02.2024	FIRST ISSUE	OKB

PROJECT:

Highall Developments,
 Halebank Road, Widnes

Type A

DRAWING TITLE:

2 Bed Mid Mews

SCALE:

1:100

PLAN REF:

A-2BMM

SIZE:

A3

REV

A